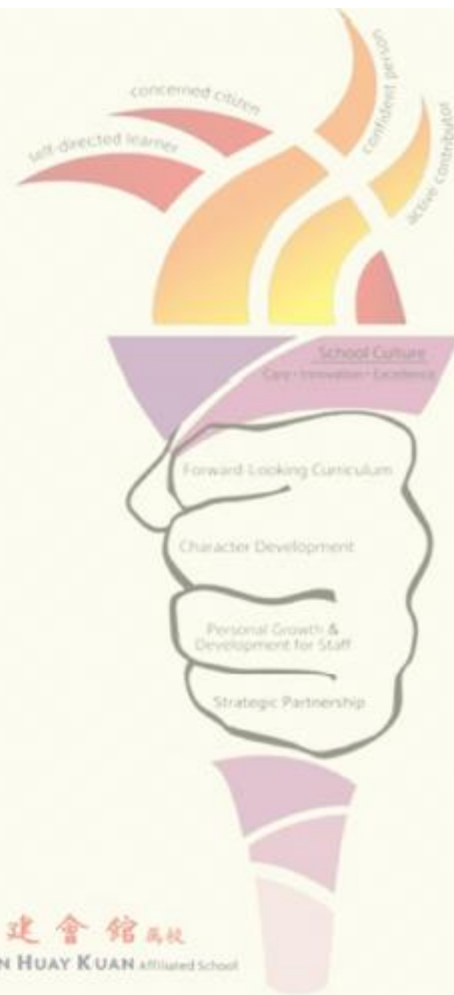


# P5 & P6 Parent Engagement Session 2023

28 April 2023  
6.00 p.m. – 8.00 p.m.



# Overview

## Agenda

- 1 Strategic Focus
- 2 PSLE Scoring
- 3 Full Subject-based Banding (SBB)
- 4 S1 Posting & DSA-Sec Exercise
- 5 Programmes
- 6 Resources
- 7 Q & A
- 8 Class Engagement Session



# Our Chongfu Torch

## - A visual representation of our strategic map



### School Vision

A community of thinkers who are patriotic, gracious and global in outlook

### School Mission

To develop our pupils in five core areas, namely moral, intellectual, physical, social and aesthetics, thereby preparing them for the future

### School Motto

Sincerity & Perseverance

### School Values

GRACIOUSLY

### Staff Values

Thinking  
Striving for Excellence  
Family Togetherness  
Life-long Learning



崇福學校  
CHONGFU SCHOOL  
ESTD 1915



新加坡福建會館屬校  
SINGAPORE HOKKIEN HUAY KUAN Affiliated School

# P1P2 Parents' Dialogue Session 2020

**OPINION** A17

**It's OK to be No. 2 in academics, but aim to top student well-being**



**Programme for International Student Assessment (Pisa), a study done every three years by the Organisation for Economic Cooperation and Development (OECD)**

*By Goh Kah Kuan*

When Singapore was ranked No. 2 in the Programme for International Student Assessment (Pisa) in 2018, it was a significant achievement. However, it is important to remember that while we excel in academics, we must also focus on the overall well-being of our students. The OECD, which organizes the Pisa study every three years, emphasizes that education should not only be about scores but also about preparing students for life. We should aim to be the best in both academics and student well-being.

**Top 10 scorers**

**Mean scores in Pisa 2018**  
Singapore slipped to No. 2

Reading	Mathematics	Science
China	590	560
Singapore	568	540
Macau	566	530
Hong Kong	552	520
Canada	551	510
Finland	527	500
Japan	526	490
South Korea	524	480
Estonia	510	470
Poland	506	460
OECD average	487	455
OECD average	488	456

**Low-income students outperform international average**

Bar chart comparing scores for low-income students (bottom 25% SES) against OECD average (bottom 25% SES) for Reading, Mathematics, and Science. Singapore scores are consistently higher than the OECD average in all three subjects.

**Afraid to fail?**  
Singaporean students do well, but have low confidence

Bar chart comparing confidence levels (when I sit down to do my schoolwork, I am nervous I will not do well enough) for Singapore and OECD average. Singaporean students show significantly lower confidence levels compared to the OECD average.







## Afraid to fail

Singaporean students do well, but have low confidence

■ Singapore

■ OECD average



# Want to be a better parent? Try doing nothing

We have all gone out of our way to shield our kids from failure or frustration. But prioritising their comfort and happiness over life skills and values does more harm than good

With today's children, it's not just their parents who are over-protective. It's also their grandparents, aunts and uncles. And it's not just the adults who are over-protective. It's the children themselves. They are so used to being protected that they don't know how to deal with failure or frustration. They are so used to being protected that they don't know how to deal with failure or frustration.



Julie Lythcott-Haims

Julie Lythcott-Haims is the former dean of freshmen at Stanford University. She is the author of the book *How To Raise An Adult*. She is a former teacher and a former dean of freshmen at Stanford University. She is the author of the book *How To Raise An Adult*.

Julie Lythcott-Haims is the former dean of freshmen at Stanford University. She is the author of the book *How To Raise An Adult*. She is a former teacher and a former dean of freshmen at Stanford University. She is the author of the book *How To Raise An Adult*.

Julie Lythcott-Haims is the former dean of freshmen at Stanford University. She is the author of the book *How To Raise An Adult*. She is a former teacher and a former dean of freshmen at Stanford University. She is the author of the book *How To Raise An Adult*.

# Want to be a better parent? Try doing nothing

**We have all gone out of our way to shield our kids from failure or frustration. But prioritising their comfort and happiness over life skills and values does more harm than good**

Most good dads today have a sinking reputation and it all boils down to one main reason: We are doing too darn much. Much scorn has been heaped on parents who are not just over-scheduling their children, but are also over-bearing, over-zealous and over-protective. Use the slew of devious labels slapped on parenting styles: tiger, helicopter, lawnmower, bulldozer. We push, hover, meddle and wish away all stumbling blocks, laser-focused on grooming them for narrowly defined success

in my life," she says. "I can infer the personal as well as the social related. As a mother, I joined the conversation in these days" they could hardly. Now, as I constantly become part of the conversation

Julie Lythcott-Haims, who wrote *How To Raise An Adult* after years of dealing with over-involved parents as the former dean of freshmen at Stanford University, has this simple advice: "The point is to prepare the kid for the road, instead of preparing the road for the kid." The good news is, children are often more resilient and

Singapore

# Singapore concept of meritocracy too narrow, need to refresh mindset on schools and grades: DPM Wong

Deputy Prime Minister Lawrence Wong's speech covered five key shifts in Singapore's refreshed social compact, including new approaches on skills, social support and caring for seniors, a new definition of success and a renewed commitment to one another.





# Skills Demand for the Future Economy

## Spotlight on Singapore's Key Growth Areas

SKILLSfuture SG

**Sponsor Bios**




**Dr. Gag Seon Joo**  
Chair Skills Officer  
SkillsFuture Singapore



Yuen Kuan Moon

- Related Content**
- Skills Demand for the Future Economy report
  - Learn about Critical Core Skills
  - Register to speak to a Skills Ambassador
  - View My SkillsFuture course directory
  - Watch video skills insight webinars
  - Emerging areas under SkillsFuture plans

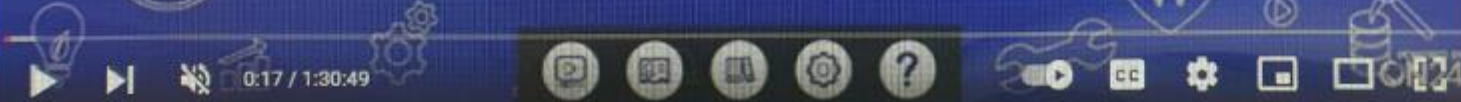
**Media Player**



Skillsfuture SG

Skills Demand for the Future Economy

0:17 / 1:30:49





# Critical Core Skills...

**Staying Relevant**



Adaptability



Digital Fluency



Global Perspective



Learning Agility



Self Management

**Thinking Critically**



Creative Thinking



Decision Making



Problem Solving



Sense Making



Transdisciplinary Thinking

**Interacting with Others**



Building Inclusivity



Collaboration



Communication



Customer Orientation



Developing People



Influence

## CFS Selected Critical Core Skills

Moral, Intellectual, Physical, Social and Aesthetics

德 智 体 群 美

Disposition	Skills	Traits
Guided by Values	Effective Communication	Adaptability
	Critical and Inventive Thinking	Resilience
	Global Perspectives (SEA)	
Digital Fluency (Digitally Skilled / Digitally Resilient)		

# Key Outcomes of Chongfu's Design Thinking ALP

## 1) Problem Solving Mindset (21<sup>st</sup> CC → Critical and Inventive Thinking)

- Creative Confidence
- Curiosity
- Critical Thinking
- Sound Reasoning and Decision-Making
- Management of Information

## 2) Resilience (21<sup>st</sup> CC → Managing Complexities and Ambiguities)

- Not giving up the face of complexities, ambiguities, problems
- Reflecting and Learning from experiences such as differences with classmates, etc (Metacognition)



# Key Outcomes of Chongfu's Design Thinking ALP

## **3) Communication, Collaboration and Information Skills (21<sup>st</sup> CC)**

- Empathy
- Effective Communication
- Effective Collaboration

## **4) Adaptability (21<sup>st</sup> CC → Global Awareness and Cross-Cultural Skills & Managing Complexities and Ambiguities)**

- Experimentation
- Managing Complexities & Ambiguities
- Global Awareness and Cross-Cultural Skills

(P3 Theme: Waste Management, P4 Theme: Sustainability, P5: Both)

## 2021: Our first cohort

Chongfu School started our first year of ALP (Chongfu Design Thinkers' Programme) in **2021** with the P3 cohort.

In 2022, we had our first P4 cohort.

In 2023, we are having our first group of P5 students.

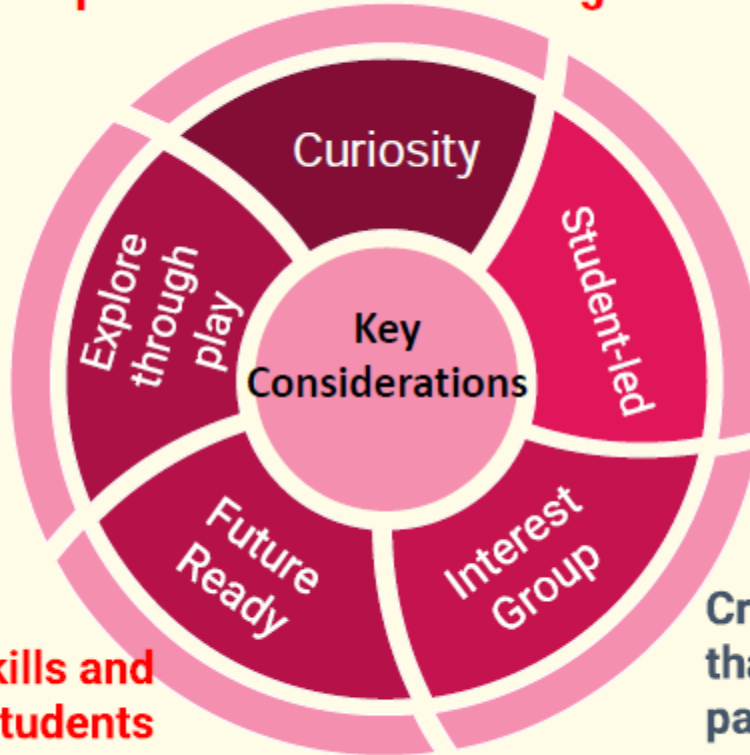
At the steady state:

- **P3 and P4 cohorts will be trained every year** in Tier 1 of the Chongfu Design Thinkers' Programme, and
- **Selected P5 students will be in Tier 2** of the ALP Programme

# CFSparks

**Pushing boundaries in igniting passion to seek knowledge.**

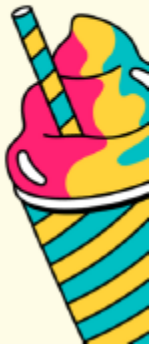
**Unstructured play through explorations and discoveries beyond classrooms that are sustainable.**



**Empowered to learn and teach their peers new skills and knowledge.**

**Learn and discover skills and knowledge to prepare students for the future. (eg life skills, knowledge, competencies)**

**Creating activities that students are passionate about.**







**Who:** Primary 1 and 2

**When:** AY2023, 1 PAL Period (every week)

**Rationale for the selection of levels:**

- Focus should be on developing life skills at these levels
- Provide students with important tools for development such as *independent thinking, how to socialise and make friends and how to take action in situations where parents/teachers may not be around to intervene*



# CFSparks P5

- Student Led
- Student for Student
- Students pursue their interests
- Explore Different Activities
- Learn and Grow
- Complete Activity Together
- Fun in Learning



**How?**









Rugby

### Rugby

- Run fast (Fit and agility)
- What he does depends on its direction, position, teammates, opposing team and goal line
- Courage & take calculated risk
- Bounce back when fall
- Aware what goes on around you

### Baton Relay

- Run fast
- Fixed route
- Perfect the run (Clock fastest time) and passing the baton
- Cannot make mistake (Drop the baton – race is over)



Baton Relay

# The PSLE SCORING and S1 POSTING

**SUPPORTING STUDENTS AND PARENTS IN MAKING  
INFORMED SCHOOL CHOICES FOR PSLE**



© MINISTRY OF EDUCATION, COMMUNICATIONS AND ENGAGEMENT GROUP, 2023



# Sharing About PSLE Matters



How does the PSLE Scoring & S1 Posting work?

How are students posted to secondary schools?



# WHAT IS THE INTENT OF THE PSLE?



**A useful checkpoint at the end of primary school**

**A fair way to determine secondary school posting**



**Our PSLE Scoring system reduces the over-emphasis on academic results by:**

- 1** Reducing fine differentiation of students' examination results at a young age.
- 2** Recognising a student's level of achievement, regardless of how his/her peers have done.
- 3** Encouraging families to choose secondary schools holistically based on students' strengths, interests and learning needs.




# WHAT ARE ACHIEVEMENT LEVELS (AL)?

- Students with similar scores in each subject are grouped into scoring bands measured in 8 ALs.
- AL bands and mark ranges are set based on the learning objectives of the curriculum, and mirror the way we learn.

AL	RAW MARK RANGE
1	$\geq 90$
2	85 – 89
3	80 – 84
4	75 – 79
5	65 – 74
6	45 – 64
7	20 – 44
8	$< 20$

# HOW DOES THE PSLE SCORING SYSTEM WORK?

- The overall **PSLE Score** is made up of 4 subject **Achievement Levels (ALs)**.
- The **PSLE Score** can range from 4 to 32, with 4 being the best.



<b>Elena</b>		<b>PSLE Score 14</b>
PSLE Subject	AL Score	
English	2	
Math	2	
Foundation Science	ALA = 6	
Mother Tongue Language	4	

# GRADING OF FOUNDATION SUBJECT GRADES

- Foundation subject grades are graded in scoring bands from AL A to C.
- To derive a student's overall PSLE Score for S1 Posting, AL A to AL C for Foundation level subjects are mapped to AL 6 to AL 8 of Standard level subjects respectively.

FOUNDATION LEVEL AL	FOUNDATION RAW MARK RANGE	EQUIVALENT STANDARD LEVEL AL
A	75 – 100	6
B	30 – 74	7
C	< 30	8

# ELIGIBILITY CRITERIA FOR HIGHER MOTHER TONGUE LANGUAGE (HMTL)

- The eligibility criteria for taking HMTL ensures that students can cope with the higher academic load.

## ELIGIBILITY CRITERIA FOR HMTL

- (i) An overall PSLE Score of 8 or better
- or
- (ii) An overall PSLE Score of 9 to 14 (inclusive); and attain
  - AL 1 / AL 2 in MTL or
  - Distinction / Merit in HMTL



## HOW DOES THE S1 POSTING WORK?







- Your child has **six choices** in selecting their secondary schools.
- Your child will be posted to a secondary school based on academic merit, i.e., PSLE Score, and their choice order of schools.
- If two or more students with the same PSLE Score vie for the last remaining place(s) in a school, the following tie-breakers are used in the following order:
  1. **CITIZENSHIP**
  2. **CHOICE ORDER OF SCHOOLS**
  3. **COMPUTERISED BALLOTING**
- The tie-breaker based on school choice order recognises the different considerations that families have in making school choices.



# HCL POSTING ADVANTAGE TO SAP SCHOOLS

Students who take HCL will receive a posting advantage when applying to SAP schools

Students will be considered for admission to SAP schools in the following order:

1st		7	NO HCL
2nd		8	DISTINCTION
3rd		8	MERIT
4th		8	PASS
5th		8	NO HCL
6th		9	DISTINCTION

Students with better PSLE Scores will be posted first, even if they did not take HCL

Amongst students with the same PSLE Score, those with better HCL grades will be posted first

- Students' HCL results are denoted as 'D' (Distinction), 'M' (Merit) or 'P' (Pass).
- Students are ranked taking into account their performance in HCL.
- This posting advantage applies before the tie-breakers for S1 Posting.

# Understanding Full Subject-Based Banding (Full SBB)



What is Full SBB?

# WHAT IS FULL SBB?

- Full SBB will be implemented in secondary schools from 2024, and aims for students to:



Have **greater ownership** of their learning according to their **strengths, interests, abilities, talents and learning needs**.



Develop a **growth mindset** and an intrinsic motivation to learn for life.



Have **more opportunities to interact** with friends of different strengths, interests, abilities and talents.



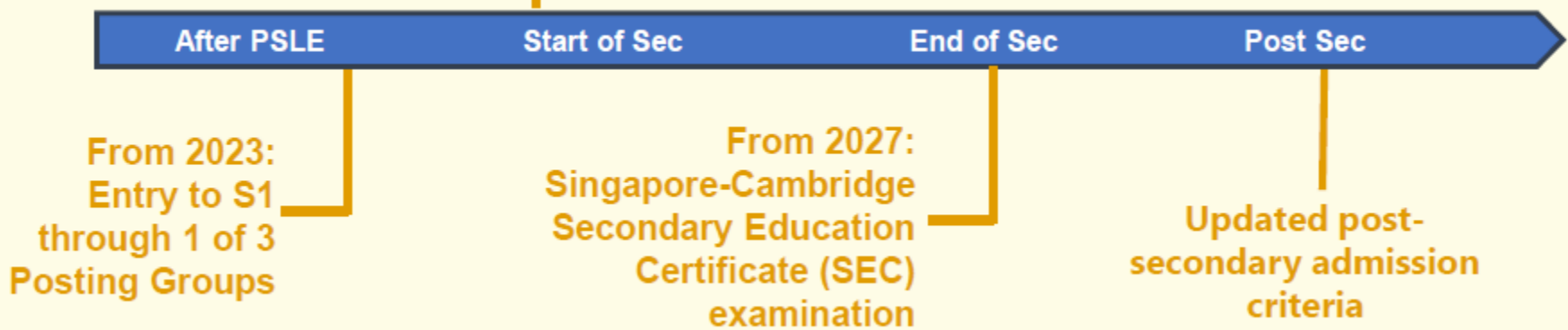
Have **more options for post-sec pathways**, while ensuring they have strong fundamentals and can thrive in their chosen pathway.



# FULL SUBJECT-BASED BANDING (FULL SBB)

## Secondary school experience under Full SBB

- Mixed form classes and common curriculum subjects at Lower Secondary.
- Subjects to be offered at G1, G2 or G3.
- **Greater flexibility** to customise students' learning by offering subjects at various subject levels.



# FULL SBB: S1 POSTING

Three Posting Groups to ensure schools are accessible to diverse learners

From the 2024 S1 cohort, MOE will facilitate the admission of P6 students into S1 through 3 Posting Groups: **Posting Group 1, 2 and 3.**

Posting Groups will only be used for the purposes of facilitating entry into secondary school and to guide the subject levels students offer at the start of S1.

PSLE Score	Posting Group	Subject level for most subjects
4 – 20	3	G3
21 and 22	2 or 3	G2 or G3
23 and 24	2	G2
25	1 or 2	G1 or G2
26 – 30 <i>(with AL 7 in EL and MA)</i>	1	G1

# FULL SBB: MIXED FORM CLASSES IN LOWER SECONDARY

Form classes arranged by academic stream in schools yet to implement Full SBB

Full SBB



Students  
in Exp  
stream



Students  
in N(A)  
stream



Students  
in N(T)  
stream

With Full SBB:  
Mixed form classes



- Under Full SBB, students will be placed in mixed form classes in Lower Secondary to ensure a **mix of learner profiles**.



Students posted through **PG3**



Students posted through **PG2**



Students posted through **PG1**

# Choosing Suitable Secondary Schools



Factors to Consider

Preparing for S1 Posting Exercise

# PSLE SCORE RANGES FOR ALL SECONDARY SCHOOLS

- Use the PSLE Score ranges as a reference alongside other important factors, such as the school's **distinctive programmes, Co-Curricular Activities (CCA), culture, ethos, and proximity to home** when shortlisting school choices that would best fit a student's educational needs.
- The PSLE Score ranges for individual secondary schools will be available for your reference on <https://moe.gov.sg/schoolfinder> and <https://go.gov.sg/exploreschools>. They reflect the PSLE scores of the students posted into these schools at the previous year's S1 Posting Exercise.





# HOW DO WE INTERPRET THE PSLE SCORE RANGES?

The **PSLE Score** range refers to the **PSLE Score** of the first and last student admitted to a particular school in the previous year via the **S1 Posting Exercise**. This shows the range of student profiles who enter each school.

## Example

XX Secondary School

PSLE Score range of 20XX (previous year's S1 Posting Exercise)

Posting Group 3	15	20
Posting Group 2	21	24
Posting Group 1	25	28

PSLE Score of the first student posted into the school in the respective PG.

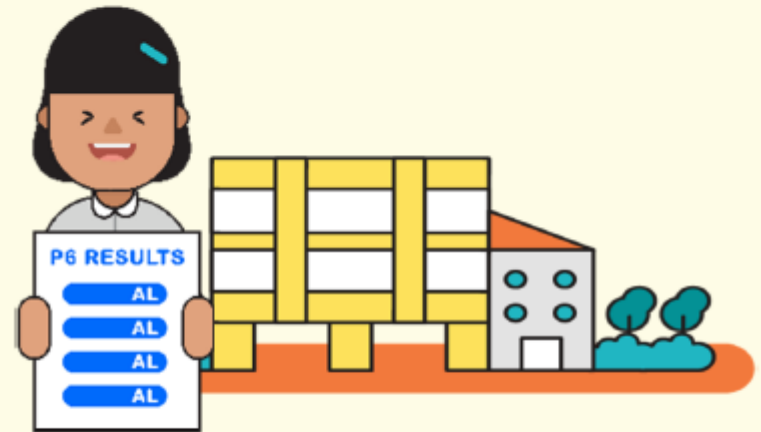
PSLE Score of the last student posted into the school in the respective PGs [i.e., the school's **Cut-Off Point (COP)**].

*Note: Posting Groups will be assigned based on PSLE Scores, mapped from existing PSLE Score ranges for Express, N(A) and N(T) streams.*

## PREPARING FOR THE S1 POSTING EXERCISE

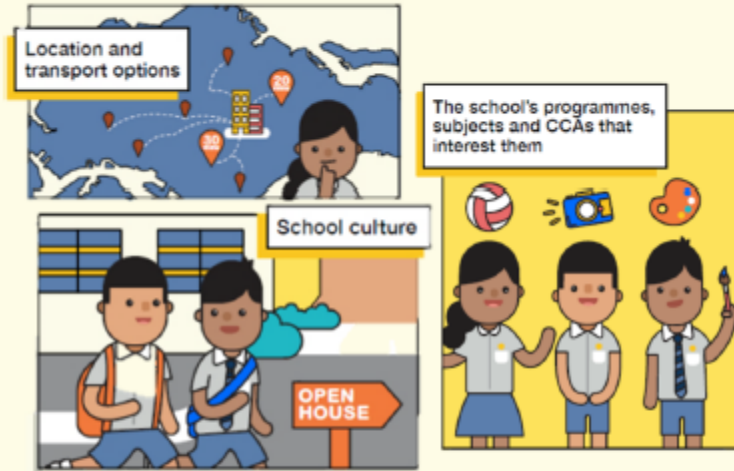


Use all 6 options with a range of Cut-off Points as this will increase your child's chances of being posted to a school of their choice.



Take reference from schools' PSLE Score ranges, which serve as a guide for you and your child to shortlist school choices. Consider at least 2-3 schools where your child's PSLE Score is better than the school's Cut-off Point.

# PREPARING FOR THE S1 POSTING EXERCISE



Shortlist schools that offer programmes that cater to your child's strengths, interests, abilities, talents and learning needs, as well as provide suitable learning environments.

Rank your child's preferred school higher in the choice order of schools. This will increase your child's chances of being posted to that school, if they need to undergo tie-breaking.

## TIPS FOR PARENTS!

Be open and flexible when discussing your child's preferences, needs and choices.

Manage your own expectations and do not project these expectations onto your child.



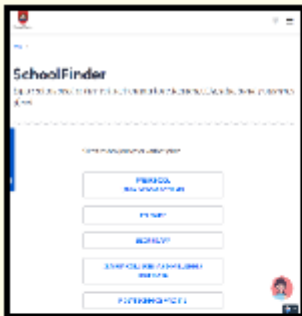
Have regular conversations with your child to understand more about his/her strengths, interests, abilities, talents and aspirations.

Affirm your child and offer support when he/she shares his/her plans with you.

# PREPARING FOR THE S1 POSTING EXERCISE

**SCHOOL  
FINDER**

*My*SKILLS*Future*



- Release of **PSLE** results
- Online Submission of **S1 School Choices and Options**



- Release of **S1 Posting results**



**OCTOBER**

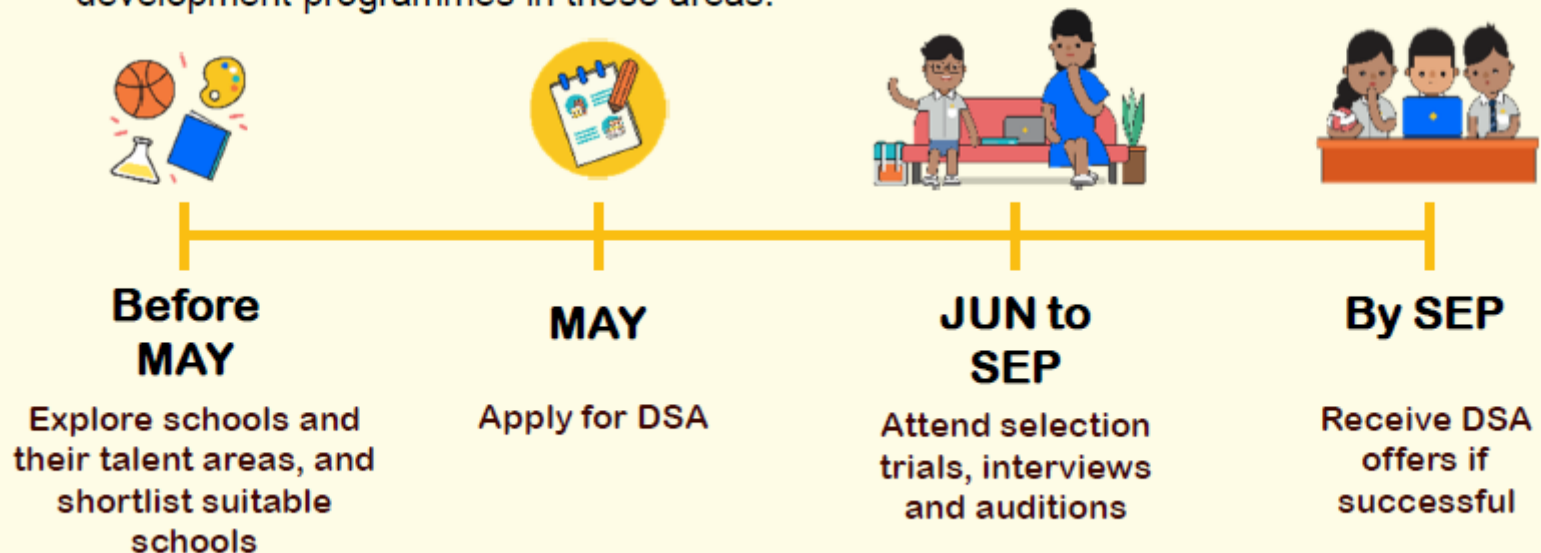
**NOVEMBER**

**DECEMBER**



# ENTERING SCHOOLS THROUGH DSA-SEC

- There is no change to the application and selection process with the shift to Full SBB.
- If your child has specific talents and strengths beyond the PSLE (e.g. areas such as sports, performing arts and leadership), consider the **Direct School Admission-Secondary (DSA-Sec)** as an alternative admission pathway to access secondary schools that have talent development programmes in these areas.



# DSA-SEC EXERCISE

- Your child can indicate up to **three choices**.
- Of the three choices, **a maximum of two choices** can be used to apply to the **same school**, for **two different talent areas** of that school.
- Academic results and school-based achievements will be shared directly with MOE. Therefore, there is **NO NEED** for testimonials and hardcopy documents.





# Programmes

## P6 SUPPLEMENTARY LESSONS

School Holidays	Date
4 <sup>th</sup> week of June Holidays	21 Jun to 23 Jun 8 a.m. – 12.30 p.m.
Term 3	Every Tuesday & Friday 1.45 p.m. – 3.45 p.m.
September Holidays	6 Sep to 8 Sep 8 a.m. – 12.30 p.m.

## PROGRAMMES

### P6

Chingay
Code for Fun (Coding)
P6 Camp iNspire
Chongfu Immersion Programme
Secondary School Publicity Talks
Graduation Preparation
Education & Career Guidance (ECG)
Learning Journey

### P5

CFSparks
P5 Camp iNspire
Project Work
NE Show
Education & Career Guidance (ECG)
Learning Journey

## SUPPORTING PARENTS & STUDENTS





# Useful resources

## Quick tips on shortlisting secondary schools

**A SECONDARY SCHOOL THAT'S SUITABLE FOR YOUR CHILD**  
Help them choose the school to their strengths and interests.

**ASK:**  
What are their strengths, interests, and abilities?  
- Are their co-curricular programmes and extracurricular activities interesting?  
- Are the fees affordable for them?

**CONSIDER:**  
- School Culture  
- Courses  
- Programmes, Subjects and OEA's Offered  
- Location and Transport  
- If your child has Special Educational Needs, meet schools and specialist teachers.

**SUBMIT:**  
- 6 School Choices  
- Submit your child's name first to get the highest of marks.  
- Schools with Different Cut-Off Points  
- Check if there is a school where your child's IQ is lower than the average IQ of other schools.

**REFER TO:**  
MOE's SchoolFinder  
Check out schools based on criteria: Primary, Co-Ed, Catholic, Islamic, Buddhist, Chinese, Indian, and American.

**YOUR RANK OF SCHOOL CHOICES MATTERS**  
The higher you rank your child's school, the higher the corresponding rank of the school.  
Do not rank schools with a score higher than the average score of other schools.

GO.gov.sg

## Tools to use to explore secondary schools

**SCHOOL FINDER**

*My*SKILLS*future*



## How-to-Guides to equip parents on how to use the tools

**How to Use SchoolFinder**  
Ministry of Education Singapore

<https://go.gov.sg/school-finder>



# Useful resources

## Transition Materials

Supporting your child's transition through **Primary 5/6**  
Helps you prepare your child for the changes that will come when they start their new school.

**SUPPORT** **AFFIRM**

**FAMILIARISE**

Supporting your child's transition through **Secondary School**  
Helps you prepare your child for the changes that will come when they start their new school.

**SUPPORT** **AFFIRM**

**FAMILIARISE** **EMPATHISE**

Talk Ask

GO.gov.sg

QR code linking to resources.

## Resilience Boosters

**POSITIVE THINKING**  
Just as you can think your way into a problem, you can think your way out of it.

**STRESS SYMPTOMS**  
Stress is a natural response to change. It can help you focus and perform better, but too much stress can be harmful.

**SETTING GOALS**  
Setting goals helps you focus on what you want to achieve and gives you a sense of direction.

**PROBLEM SOLVING**  
The S.O.A.S. method helps you solve problems effectively.

Tips for Parents:

GO.gov.sg

QR code linking to resources.

# FIND OUT MORE ON THE PSLE-FSBB MICROSITE



<https://go.gov.sg/pslefsbb>



# EXPLORE YOUR FULL SBB PATH



<https://go.gov.sg/my-fsbb-path>



## OTHER RESOURCES

SchoolFinder Tool

# SCHOOL FINDER



[https://go.gov.sg/  
secschoolfinder](https://go.gov.sg/secschoolfinder)

“Welcome to Secondary  
School” video



[https://go.gov.sg/  
welcome-to-  
secondary-school](https://go.gov.sg/welcome-to-secondary-school)

Secondary School  
Education Booklet



[https://go.gov.sg/  
psle-sec-sch-  
brochure](https://go.gov.sg/psle-sec-sch-brochure)

Student Journey Map and  
School Explorer Card



[https://go.gov.sg/  
psle-student-  
journey](https://go.gov.sg/psle-student-journey)

# OTHER RESOURCES

## ECG Tips For Parents



[https://go.gov.sg/  
tips-for-parents](https://go.gov.sg/tips-for-parents)

## MySkillsFuture Student Portal (Primary)



<https://go.gov.sg/mysfpri>

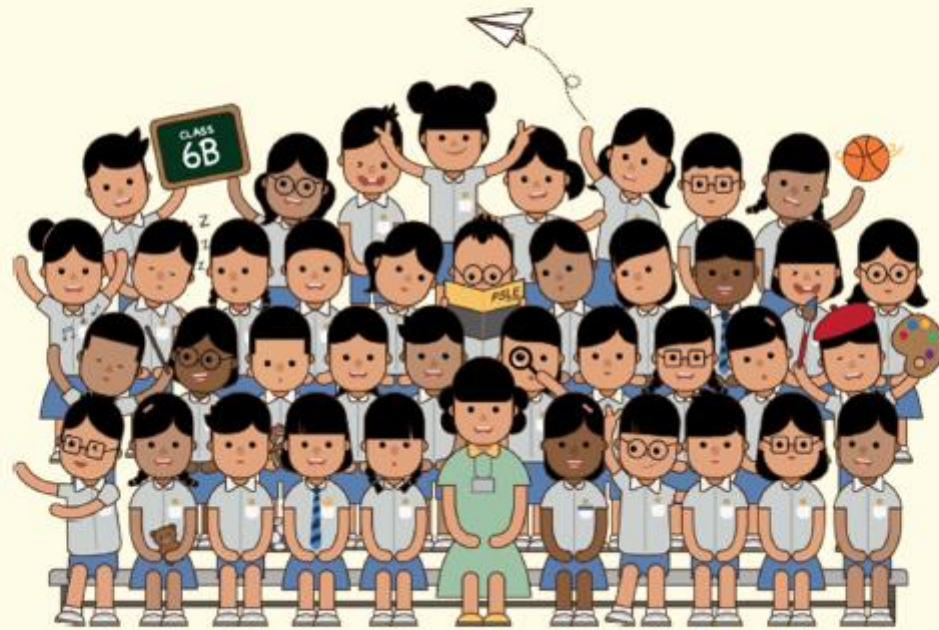
## ECG What's Next



<https://go.gov.sg/whats-next-psle>



# THANK YOU



© MINISTRY OF EDUCATION, COMMUNICATIONS AND ENGAGEMENT GROUP, 2023